

**Product Code:**  
**MPS.MDXSW** (small pair)  
**MPS.MDXLW** (long single)



Marine Protection Systems

# MARINE PROTECTION SYSTEMS

Corrosion Control That Works

## SMALL WEDGE ANODE



## LONG WEDGE ANODE



**Product code.**  
 MPS.MDXSW- Pair



**Product code.**  
 MPS.MDXLW - Single

### Special Features

- Tapered front edge reduces drag when used on rudders
- Pre-drilled for mounting supplied with 8mm washers
- Fins increase surface area
- Various mounts and applications

### Specifications

Anode Part No	Length (mm)	Width (mm)	Height (mm)	Weight (g)
Small Wedge MPS.MDXSW	90	60	25	290
Long Wedge MPS.MDXSW	150	60	25	724

**mV potential:** In sea and water when calibrated and independent to other metal: -710mV (on average)

**USES:** Trim tab, rudder, swim platform or other areas where smaller anodes are required.

**Supplied as:** Small pairs or Long single, including 2 x 8mm star washes and fitting instruction label.

Further installation and warranty instructions can be obtained from the MPS website: [www.marineprosystems.com.au](http://www.marineprosystems.com.au)



Marine Protection Systems

# MARINE PROTECTION SYSTEMS

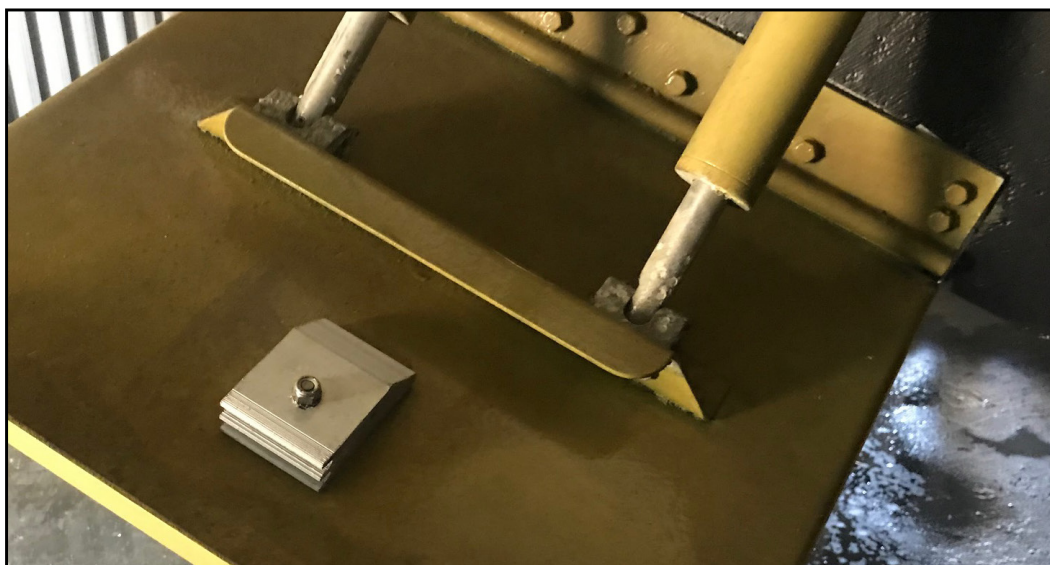
Corrosion Control That Works

## ANODE INSTALLATION

### Swim Platform



### Trim Tab



Further installation and warranty instructions can be obtained from the MPS website: [www.marineprosystems.com](http://www.marineprosystems.com)

[WWW.MARINEPROSYSTEMS.COM](http://WWW.MARINEPROSYSTEMS.COM)