

Product Code:
MPS.MDXWD (Large wedge)



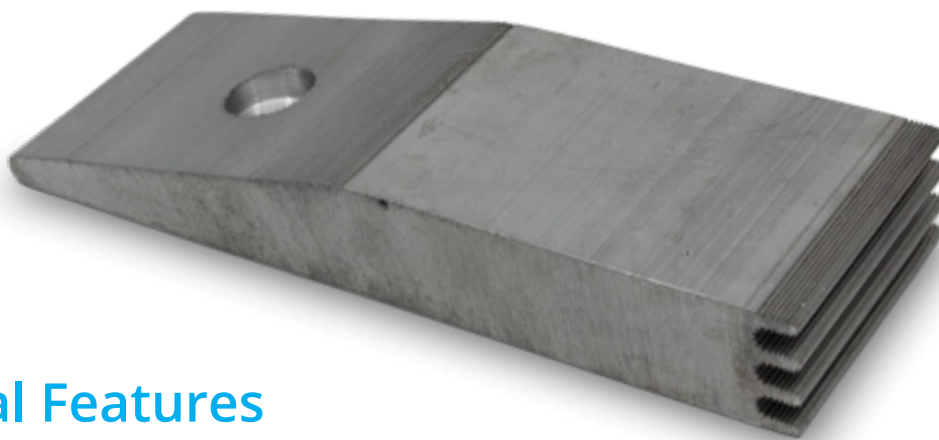
Marine Protection Systems

MARINE PROTECTION SYSTEMS

Corrosion Control That Works



LARGE WEDGE ANODE



Product code
MPS.MDXWD

Special Features

- Tapered front edge reduces drag
- Rebated mounting hold makes fitting easier and faster
- Fins increase surface area
- Capacity to drill second mount hole to suit vessel

Specifications

Anode Part No	Length (mm)	Width (mm)	Height (mm)	Weight (g)
Large Wedge MPS.MDXWD	240	80	35	1373

mV potential: In sea and water when calibrated and independent to other metal: -710mV (on average)

Uses: Under hull mount, keel or slipper mount, shoe or skeg mount. Designed as medium sized anode with reduced drag.

Supplied as: Single unit, including 2 x 10mm star washers and fitting instruction label.

Further installation and warranty instructions can be obtained from the MPS website: www.marineprosystems.com

WWW.MARINEPROSYSTEMS.COM



Marine Protection Systems

MARINE PROTECTION SYSTEMS

Corrosion Control That Works

INSTALLATION PHOTOS



Further installation and warranty instructions can be obtained from the MPS website: www.marineprosystems.com

WWW.MARINEPROSYSTEMS.COM